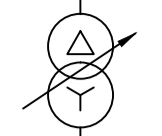
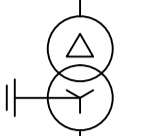
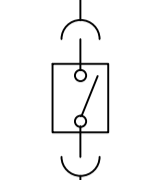
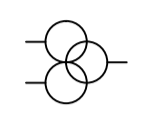
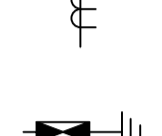
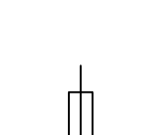
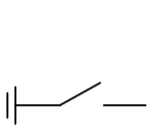
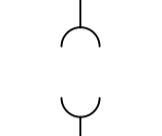

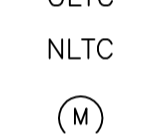



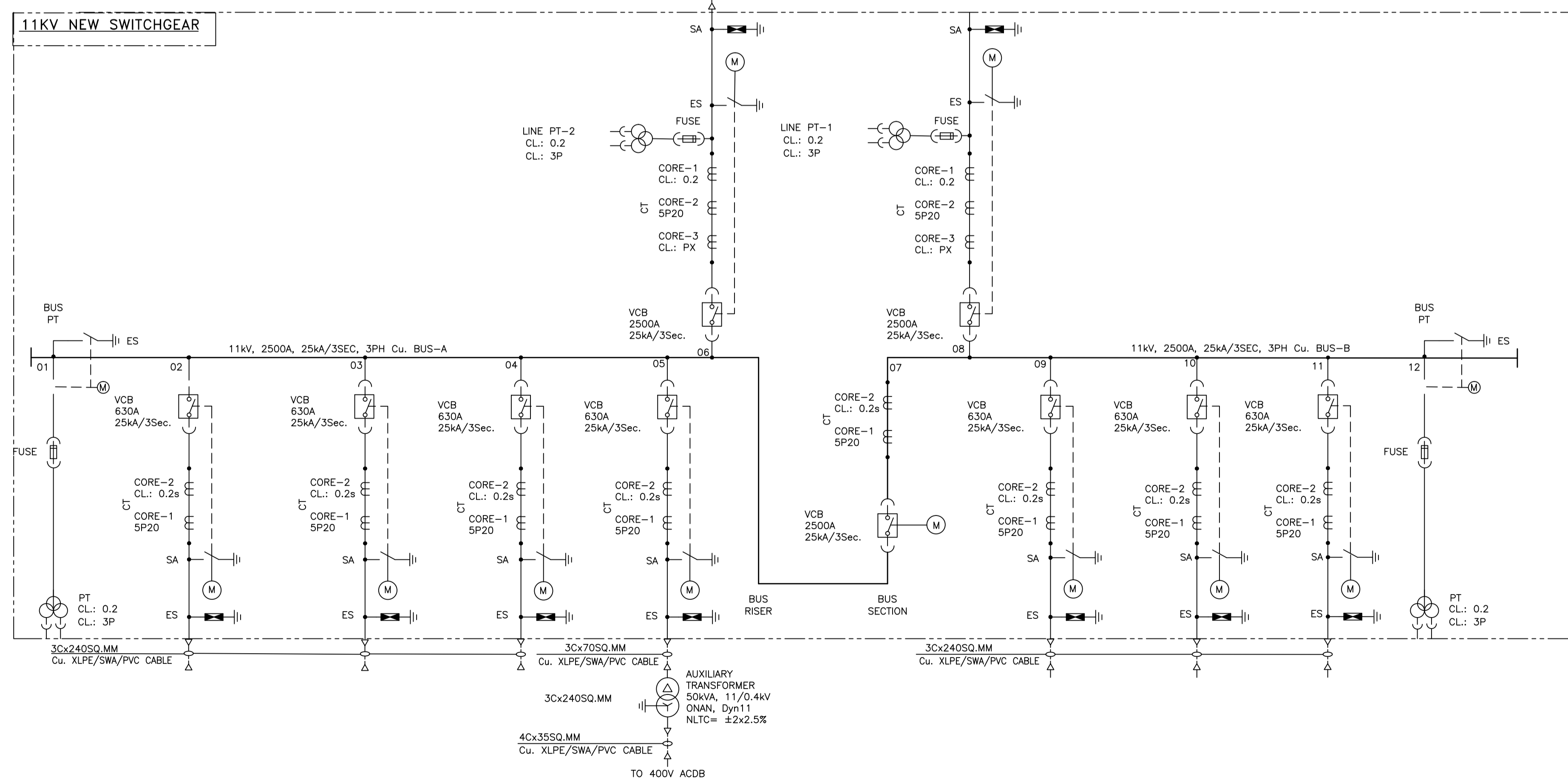
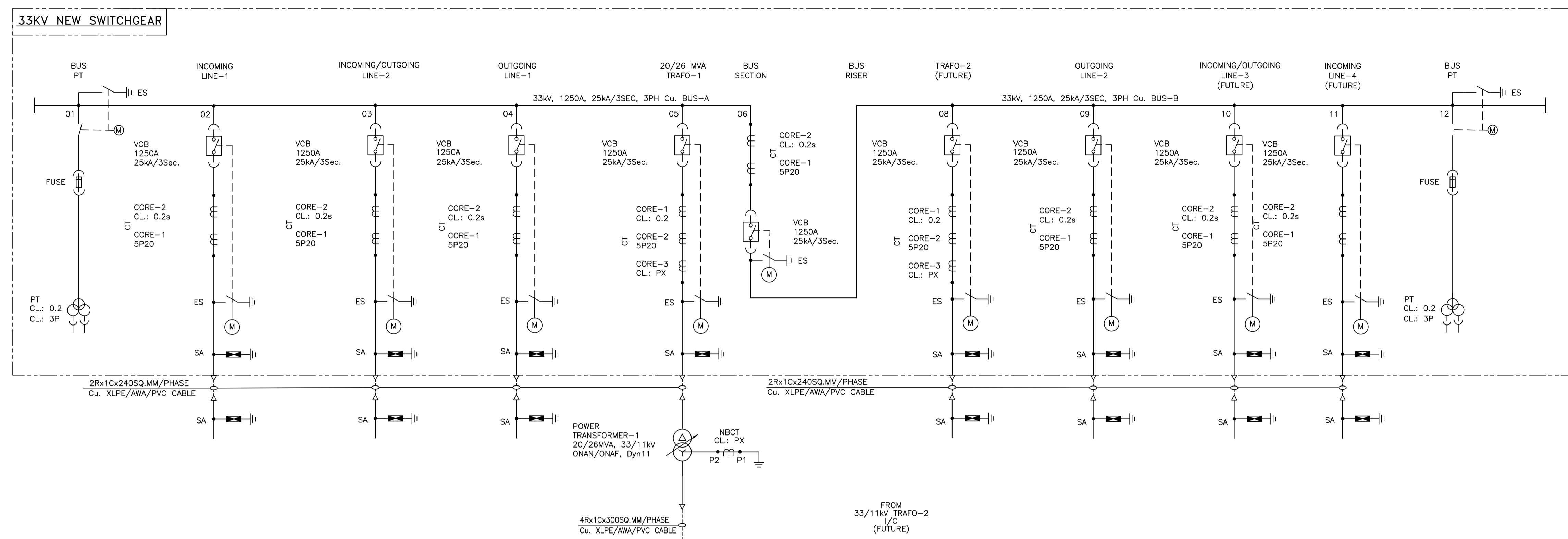


# Clinetown Substation

## LEGENDS:

-  15/20MVA, 33/11kV POWER TRANSFORMER WITH OLTC
-  50kVA, 11/0.4kV STN. TRANSFORMER
-  VACUUM CIRCUIT BREAKER (DRAW OUT TYPE) (MOTOR OPERATED)
-  POTENTIAL TRANSFORMER
-  CURRENT TRANSFORMER
-  SURGE ARRESTOR (SA)
-  FUSE
-  EARTH SWITCH (ES)
-  DRAW OUT TYPE EQUIPMENT
-  CABLE
-  OLTC
-  NLTC
-  MOTORISED SWITCH



REPUBLIC OF SIERRA LEONE



MINISTRY OF ENERGY

UPGRADE OF FREETOWN PRIMARY DISTRIBUTION NETWORK

---

BASIC SLD OF NEW 33/11kV INDOOR SUBSTATION AT ABERDEEN